



Supporting pupils with medical conditions policy

Key Contact Personnel in School

Designated Safeguarding Lead: Helen Bradley-Wyatt (HT)

Deputy Designated Safeguarding Lead:

Zoe Wright (SENDCo) and Tammie Allen-Harding (DHT)

Named Safeguarding Governor: Sarah Howell

Date written: September 2025

Date agreed and ratified by Governing Body:

Date of next review: September 2026

This policy is written in line with the requirements of:-

Children and Families Act 2014 - section 100

Supporting pupils at school with medical conditions: statutory guidance for governing bodies of maintained schools and proprietors of academies in England, DfE Sept 2014

0-25 SEND Code of Practice, DfE 2014

Mental Health and behaviour in schools: departmental advice for school staff, DfE June 2014

Equalities Act 2010

Schools Admissions Code, DfE 1 Feb 2010

This policy should be read in conjunction with the following school policies:

SEN Policy / SEN Information Report, Safeguarding Policy, Off-site visits policy and Complaints Policy.

This policy will be reviewed annually.

We currently have four pupils with medical conditions.

Definitions of medical Conditions

Pupils' medical needs may be broadly summarised as being of two types:-

Short-term affecting their participation at school because they are on a course of medication.

Long-term potentially limiting access to education and requiring on-going support, medicines or care while at school to help them to manage their condition and keep them well, including monitoring and intervention in emergency circumstances. It is important that parents feel confident that the school will provide effective support for their child's medical condition and that pupils feel safe.

Some children with medical conditions may be considered disabled. Where this is the case governing bodies **must** comply with their duties under the Equality Act 2010. Some may also have special educational needs (SEN) and may have a statement or Education, Health and Care Plan (EHCP). Where this is the case this policy should be read in conjunction with the 0-25 SEND Code of Practice and the school's SEN policy / SEN Information Report and the individual healthcare plan will become part of the EHCP.

The statutory duty of the governing body

The governing body remains legally responsible and accountable for fulfilling their statutory duty for supporting pupils at school with medical conditions. The governing body of Hollingbourne School fulfil this by:-

- Ensuring that arrangements are in place to support pupils with medical conditions. In doing so we will ensure that such children can access and enjoy the same opportunities at school as any other child;
- Taking into account that many medical conditions that require support at school will affect quality of life and may be life-threatening. Some will be more obvious than others and therefore the focus is on the needs of each individual child and how their medical condition impacts on their school life;
- Ensuring that the arrangements give parents and pupils confidence in the school's ability to provide effective support for medical conditions, should show an understanding of how medical conditions impact on a child's ability to learn, as well as increase their confidence and promote self-care. We will ensure that staff are properly trained to provide the support that pupils need;
- Ensuring that no child with a medical condition is denied admission, or prevented from taking up a place in school because arrangements for their medical condition have not been made. However, in line with safeguarding duties, we will ensure that pupils' health is not put at unnecessary risk from, for example, infectious diseases, and reserve the right to refuse admittance to a child at times where it would be detrimental to the health of that child or others to do so;
- Ensuring that the arrangements put in place are sufficient to meet our statutory duties and ensure that policies, plans, procedures and systems are properly and effectively implemented;
- Developing a policy for supporting pupils with medical conditions that is reviewed regularly and accessible to parents and school staff (this policy);
- Ensuring that the policy includes details on how the policy will be implemented effectively, including a named person who has overall responsibility for policy implementation (see section below on policy implementation);
- Ensuring that the policy sets out the procedures to be followed whenever the school is notified that a pupil has a medical condition (see section below on procedure to be followed when notifications is received that a pupil has a medical condition);
- Ensuring that the policy covers the role of individual healthcare plans, and who is responsible for their development, in supporting pupils at school with medical conditions (see section below on individual healthcare plans);
- Ensuring that the school policy clearly identifies the roles and responsibilities of all those involved in arrangements for supporting pupils at school with medical conditions and how they will be supported, how their training needs will be assessed and how and by whom training will be

commissioned and provided (see section below on staff training and support);

- Ensuring that the school policy covers arrangements for children who are competent to manage their own health needs and medicines (see section below on the child's role in managing their own medical needs);
- Ensuring that the policy is clear about the procedures to be followed for managing medicines including the completion of written records (see section below on managing medicines on school premises);
- Ensuring that the policy sets out what should happen in an emergency situation (see section below on emergency procedures);
- Ensuring that the arrangements are clear and unambiguous about the need to support actively pupils with medical conditions to participate in school trips and visits, or in sporting activities, and not prevent them from doing so (see section on day trips, residential trips and sporting activities);
- Considering whether to
 - develop transport healthcare plans in conjunction with the LA for pupils with life-threatening conditions who use home- to- school transport
 - Purchase and train staff in the use of defibrillators
 - Once regulations are changed consider holding asthma inhalers for emergency use;
- Ensuring that the policy is explicit about what practice is not acceptable (see section on unacceptable practice);
- Ensuring that the appropriate level of insurance is in place and appropriate to the level of risk (see section on Liability and Indemnity);
- Ensuring that the policy sets out how complaints may be made and will be handled concerning the support to pupils with medical conditions (see section on complaints).

Policy implementation

The statutory duty for making arrangements for supporting pupils at school with medical conditions rests with the governing Body. The governing body have conferred the following functions of the implementation of this policy to the staff below, however, the governing body remains legally responsible and accountable for fulfilling our statutory duty.

The overall responsibility for the implementation of this policy is given to Mrs H. Bradley-Wyatt (Head Teacher). She will also be responsible for ensuring that

sufficient staff are suitably trained and will ensure cover arrangements in cases of staff absences or staff turnover to ensure that someone is always available and on-site with an appropriate level of training.

Mrs T. Allen-Harding (Deputy Head Teacher) will be responsible for briefing supply teachers, preparing risk assessments for school visits and other school activities outside of the normal timetable and for the monitoring of individual healthcare plans.

Miss Z. Wright (SENDCo) will be responsible in conjunction with parents/carers, for drawing up, implementing and keeping under review the individual healthcare plan for each pupil and making sure relevant staff are aware of these plans.

All members of staff are expected to show a commitment and awareness of children's medical conditions and the expectations of this policy. All new members of staff will be inducted into the arrangements and guidelines in this policy upon taking up their post.

Procedure to be followed when notification is received that a pupil has a medical condition

This covers notification prior to admission, procedures to cover transitional arrangements between schools or alternative providers, and the process to be followed upon reintegration after a period of absence or when pupils' needs change. For children being admitted to Hollingbourne School for the first time with good notification given, the arrangements will be in place for the start of the relevant school term. In other cases, such as a new diagnosis or a child moving to Hollingbourne School mid-term, we will make every effort to ensure that arrangements are put in place within two weeks.

In making the arrangements, we will take into account that many of the medical conditions that require support at school will affect quality of life and may be life-threatening. We also acknowledge that some may be more obvious than others. We will therefore ensure that the focus is on the needs of each individual child and how their medical condition impacts on their school life. We aim to ensure that parents/carers and pupils can have confidence in our ability to provide effective support for medical conditions in school, so the arrangements will show an understanding of how medical conditions impact on the child's ability to learn, as well as increase their confidence and promote self-care.

We will ensure that staff are properly trained and supervised to support pupils' medical conditions and will be clear and unambiguous about the need to support actively pupils with medical conditions to participate in school trips and visits, or in sporting activities, and not prevent them in doing so. We will make arrangements for the inclusion of pupils in such activities with any adjustments as required unless evidence from a clinician such as a GP states that this is not possible. We will make sure that no child with a medical condition is denied admission or prevented from attending the school because arrangements for supporting their medical condition have not been made. However, in line with our safeguarding duties, we will ensure that all pupils' health is

not put at unnecessary risk from, for example infectious disease. We will therefore not accept a child in school at times where it would be detrimental to the health of that child or others.

Hollingbourne School does not have to wait for a formal diagnosis before providing support to pupils. In cases where a pupil's medical condition is unclear, or where there is a difference of opinion, judgements will be needed about what support to provide based on available evidence. This would normally involve some form of medical evidence and consultation with parents/carers. Where evidence conflicts, some degree of challenge may be necessary to ensure that the right support can be put in place. These discussions will be led by Mrs T. Allen-Harding and following these discussions an individual healthcare plan will be written in conjunction with the parent/carers by Miss Wright, and be put in place.

Individual healthcare plans

Individual healthcare plans will help to ensure that Hollingbourne School effectively supports pupils with medical conditions. The plan can support personal (feeding, dressing/undressing, toilet prompting) and intimate care (managing incontinence and providing toileting support). Plans will provide clarity about what needs to be done, when and by whom. They will often be essential, such as in cases where conditions fluctuate or where there is a high risk that emergency intervention will be needed. They are likely to be helpful in the majority of other cases too, especially where medical conditions are long-term and complex. However, not all children will require one. The school, healthcare professional and parent/carer should agree, based on evidence, when a healthcare plan would be inappropriate or disproportionate. If consensus cannot be reached the Headteacher, Mrs H. Bradley-Wyatt, is best placed to take a final view. A flow chart for identifying and agreeing the support a child needs and developing an individual healthcare plan is provided at annex A.

Individual healthcare plans will be easily accessible to all who need to refer to them, while preserving confidentiality. Plans will capture the key information and actions that are required to support the child effectively. The level of detail within the plan will depend on the complexity of the child's condition and the degree of support needed. This is important because different children with the same health condition may require very different support. Where a child has SEN but does not have a statement of EHC plan, their special educational needs should be mentioned in their individual healthcare plan.

Individual healthcare plans (and their review) should be drawn up in partnership between the school, parents/carers and a relevant healthcare professional e.g. school, specialist or children's community nurse, who can best advise on the particular needs of the child. Pupils should also be involved whenever appropriate to develop their independence. Safeguarding considerations will be made for intimate healthcare plans. The aim should be to capture the steps which Hollingbourne School should take to help manage their condition and overcome any potential barriers to getting the most from their education. Partners should agree who will take the lead in writing the plan, but responsibility for ensuring it is finalised and implemented rests with the school.

Hollingbourne School will ensure that individual healthcare plans are reviewed at least annually or earlier if evidence is presented that the child's needs have changed. They will be developed and reviewed with the child's best interests in mind and ensure that Hollingbourne School assesses and manages risks to the child's education, health and social wellbeing, and minimises disruption. Where a child is returning to school following a period of hospital education or alternative provision, we will work with the local authority and education provider to ensure that the individual healthcare plan identifies the support the child will need to reintegrate effectively.

Annex A provides a basic template for the individual healthcare plan, and although this format may be varied to suit the specific needs of each pupil, they should all include the following information:

- The medical condition, its triggers, signs, symptoms and treatments;
- The pupil's resulting needs, including medication (dose, side effects and storage) and other treatments, time, facilities, equipment, testing, access to food and drink where this is used to manage their condition, dietary requirements and environmental issues e.g. crowded corridors, travel time between lessons;
- Specific support for the pupil's educational, social and emotional needs - for example, how absences will be managed, requirements for extra time to complete exams, use of rest periods or additional support in catching up with lessons, counselling sessions;
- The level of support needed (some children will be able to take responsibility for their own health needs) including in emergencies. If a child is self-managing their medication, this should be clearly stated with appropriate arrangements for monitoring;
- Who will provide this support, their training needs, expectations of their role and confirmation of proficiency to provide support for the child's medical condition from a healthcare professional; and cover arrangements for when they are unavailable;
- Who in the school needs to be aware of the child's condition and the support required;
- Arrangements for written permission from parents/carers and the Headteacher, Mrs H. Bradley-Wyatt, for medication to be administered by a member of staff, or self-administered by the pupil during school hours;
- Separate arrangements or procedures required for school trips or other school activities outside of the normal school timetable that will ensure the child can participate eg, risk assessment;

- Where confidentiality issues are raised by the parent/child, the designated individual to be entrusted with information about the child's condition; and
- What to do in an emergency, including whom to contact, and contingency arrangements. Some children may have an emergency healthcare plan prepared by their lead clinician that could be used to inform development of their individual healthcare plan

Roles and responsibilities

Please refer to the section on policy implementation for the functions that have been delegated to different, named members of staff at Hollingbourne School.

In addition, we can refer to the **Community Nursing Team** for support with drawing up Individual Healthcare Plans, provide or commission specialist medical training, liaison with lead clinicians and advice or support in relation to pupils with medical conditions.

Other **healthcare professionals, including GPs and paediatricians** should notify the Community Nursing Team when a child has been identified as having a medical condition that will require support at school. Specialist local health teams may be able to provide support, and training to staff, for children with particular conditions (e.g. asthma, diabetes, epilepsy).

Pupils with medical conditions will often be best placed to provide information about how their condition affects them. They should be fully involved in discussions about their medical support needs and contribute as much as possible to the development of, and comply with, their individual healthcare plan. Other pupils will often be sensitive to the needs of those with medical conditions, and can, for example, alert staff to the deteriorating condition or emergency need of pupils with medical conditions.

Parents/carers should complete a Medical Record form and provide the school with sufficient and up-to-date information about their child's medical needs. They may in some cases be the first to notify the school that their child has a medical condition. Parents are key partners and should be involved in the development and review of their child's individual healthcare plan, and may be involved in its drafting. They should carry out any action they have agreed to as part of its implementation, e.g. provide medicines and equipment and ensure they or another nominated adult are contactable at all times.

Local authorities are commissioners of school nurses for maintained schools and academies in Kent. Under Section 10 of the Children Act 2004, they have a duty to promote co-operation between relevant partners such as governing bodies of maintained schools, proprietors of academies, clinical commissioning groups and NHS England, with a view to improving the well-being of children with regard to their physical and mental health, and their education, training and recreation. KCC is currently consulting on the re-organisation of its Health Needs provision which will strengthen its ability to provide support, advice and guidance, including suitable

training for school staff, to ensure that the support specified within individual healthcare plans can be delivered effectively. KCC will work with us to support pupils with medical conditions to attend full time. Where pupils would not receive a suitable education in a mainstream school because of their health needs, The local authority has a duty to make other arrangements. Statutory guidance for local authorities sets out that they should be ready to make arrangements under this duty when it is clear that a child will be away from school for 15 days or more because of health needs (whether consecutive or cumulative across the year) education for children with health needs who cannot attend school

Providers of health services should co-operate with schools that are supporting children with medical conditions. They can provide valuable support, information, advice and guidance to schools, and their staff, to support children with medical conditions at school.

Clinical commissioning groups (CCGs) commission other healthcare professionals such as specialist nurses. They have a reciprocal duty to co-operate under Section 10 of the Children Act 2004 (as described above for local authorities). The local Health and Well-being Board provides a forum for the local authority and CCGs to consider with other partners, including locally elected representatives, how to strengthen links between education, health and care settings.

The **Ofsted** inspection framework places a clear emphasis on meeting the needs of disabled children and pupils with SEN, and considering the quality of teaching and the progress made by these pupils. Inspectors are already briefed to consider the needs of pupils with chronic or long-term medical conditions alongside these groups and to report on how well their needs are being met. Schools are expected to have a policy dealing with medical needs and to be able to demonstrate that it is being implemented effectively.

Staff training and support

School first aiders with paediatric training are:

Mrs H Bradley-Wyatt
Mrs H Eamus
Miss S Huckstepp
Mrs J Bennett

Named people for administering medicines:

Mrs Z. Rout (Office Manager)
Mrs H. Bradley-Wyatt
Mrs V. Smith (admin assistant)
In their absence, medicine may be administered by a school first aider.

The following staff have received Specific/specialist training:

Diabetes training: Mrs H Bradley-Wyatt, Mrs T Allen-Harding, Miss C Lands, Miss A Lamb, Mrs J Beale and Mrs Z Rout.

Allergy training: Mrs Z Rout and Miss Z Wright.

Please refer to our first aid and medicines policy for information about what medicines we can administer and how this is recorded.

All staff who are required to provide support to pupils for medical conditions will be trained by healthcare professional qualified to do so. The training need will be identified by the healthcare professional during the development or review of the individual healthcare plan. We may choose to arrange training ourselves and will ensure that it remains up-to-date.

Training should be sufficient to ensure that staff are competent and have confidence in their ability to support pupils with medical conditions, and to fulfil the requirements set out in the individual healthcare plans. They will need an understanding of the specific medical conditions they are being asked to deal with, their implications and preventative measures.

All staff will receive induction training and regular whole school awareness training so that all staff are aware of the school's policy for supporting pupils with medical conditions and their role in implementing the policy. Mrs H. Bradley-Wyatt, Headteacher, will seek advice from relevant healthcare professionals about training needs, including preventative and emergency measures so that staff can recognise and act quickly when a problem occurs.

The family of a child will often be key in providing relevant information to school staff about how their child's needs can be met, and parents will be asked for their views. They should provide specific advice, but should not be the sole trainer.

Emergency procedures

Mrs H. Bradley-Wyatt, Headteacher will ensure that arrangements are in place for dealing with emergencies for all school activities wherever they take place, including school trips within and outside the UK, as part of the general risk management process.

Where a child has an individual healthcare plan, this should clearly define what constitutes an emergency and explain what to do, including ensuring that all relevant staff are aware of emergency symptoms and procedures. Other pupils in the school should know what to do in general terms, such as informing a teacher immediately if they think help is needed.

If a child needs to be taken to hospital, staff should stay with the child until the parent arrives, or accompany a child taken to hospital by ambulance. Schools need to ensure

they understand the local emergency services cover arrangements and that the correct information is provided for navigation systems.

Day trips, residential visits, and sporting activities

We will actively support pupils with medical condition to participate in day trips, residential visits and sporting activities by being flexible and making reasonable adjustments unless there is evidence from a clinician such as a GP that this is not possible.

We will always conduct a risk assessment so that planning arrangements take account of any steps needed to ensure that pupils with medical conditions can be included safely. This will involve consultation with parents\carers and relevant healthcare professions and will be informed by Health and Safety Executive (HSE) guidance on school trips.

Other issues for consideration

Where a pupil uses home-to-school transport arranged by the LA and they also have a medical condition which is life-threatening, we will share the pupil's individual healthcare plan with the local authority.

Unacceptable practice

Although staff at Hollingbourne School should use their discretion and judge each case on its merit with reference to the child's individual healthcare plan, it is not generally acceptable practice to:

- Prevent children from easily accessing their inhalers and medication and administering their medication when and where necessary;
- Assume that every child with the same condition requires the same treatment;
- Ignore the views of the child or their parents\carers; or ignore medical evidence or opinion (although this may be challenged);
- Send children with medical conditions home frequently or prevent them from staying for normal school activities, including lunch, unless this is specified in their individual healthcare plans;
- If the child becomes ill, send them to the school office or medical room unaccompanied or with someone suitable;
- Penalise children for their attendance record if their absences are related to their medical condition, e.g. hospital appointments;

- Prevent pupils from drinking, eating or taking toilet breaks whenever they need to in order to manage their medical condition effectively;
- Require parents\carers, or otherwise make them feel obliged, to attend school to administer medication or provide medical support to their child, including with toileting issues. No parent should have to give up working because the school is failing to support their child's medical needs; or
- Prevent children from participating, or creating unnecessary barriers to children participating in any aspect of school life, including school trips, e.g. by requiring parents to accompany the child.

Liability and indemnity

Our Insurance is organised through KCC- Zurich Municipal

Limit of Indemnity: Public Liability: £ 50,000,000 any one event

Products Liability: £ 50,000,000 for all claims in the

Pollution: aggregate during any one period of insurance

Employers' Liability: £ 50,000,000 any one event inclusive of costs

Official's Indemnity: £ 5,000,000 in the aggregate

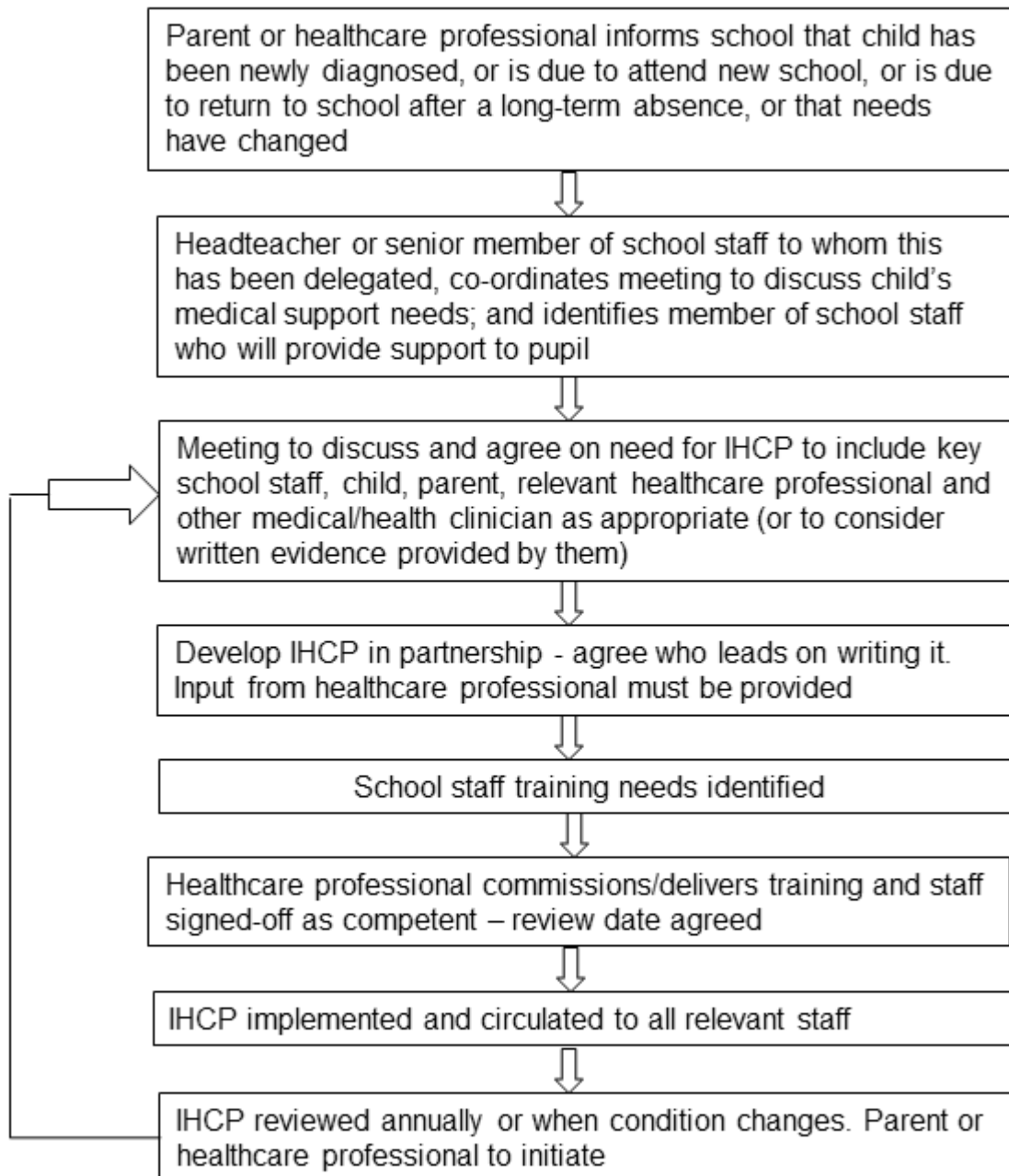
Libel and Slander: £ 5,000,000 in the aggregate

Land Charges: £ 5,000,000

Complaints

Should parents\carers be unhappy with any aspect of their child's care at Hollingbourne School, they must discuss their concerns with the school. This will be with the child's class teacher in the first instance, with whom any issues should be addressed. If this does not resolve the problem or allay the concern, the problem should be brought to a member of the leadership team, who will, where necessary, bring concerns to the attention of the Headteacher. In the unlikely event of this not resolving the issue, the parent\carer must make a formal complaint using the Hollingbourne School Complaints Procedure.

Annex A: Model process for developing individual healthcare plans



Individual Healthcare Plan



CONFIDENTIAL INDIVIDUAL HEALTHCARE PLAN FOR:

Name		DOB	
School			
Class			
Year			
Date of Plan			
Review date			

CONTACT DETAILS

Parent name (Mum)		Contact number	
Parent name (Dad)		Contact number	
Anyone else to contact in case of emergency?		Contact number	
GP name/ surgery and contact details			
Hospital name and any clinician details			
Diagnosis/ current condition Does child have SEN?			
Description of medical needs including symptoms, triggers, signs, treatments, equipment and environmental issues.			
If administered in school: Name of medication, dose, method of administration, when to be taken, side effects, contra-indications, administered			

